



Item number. **PW01188301**

Description .OE style running board for 12+ Volvo XC60



NOTICE:

- ⇒ The figures here are for reference only and may have differences with the actual product you received, however they share the same assembly way.
- ⇒ Please read the instruction completely for easy installation, which will also help you to avoid scratches or other potential damages to your appealing car.
- ⇒ Please periodically check and retighten all the hardware and clean the investment for a refresh look.





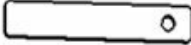







Function and features:

- ⇒ Personalized and exquisite design. Match perfectly with the car body. Humanity design. It was installed on the chassis hole.



Item	Quantity	Description	Item	Quantity	Description
------	----------	-------------	------	----------	-------------



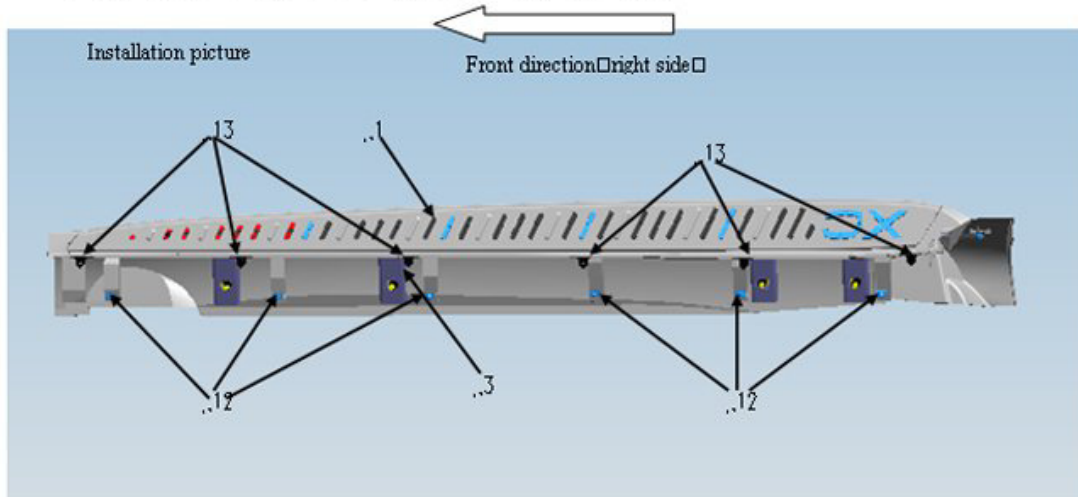
..1	1	 Right running board (bilateral symmetry)	..2	1	 Left running board (bilateral symmetry)
..3	1	 Right framework	..4	1	 Left framework
..5	1	 Lamb tool	..6	1	 Hex bolt M10.55
..7	1	 Hex nut M10	..8	8	 Spring washer D10
..9	8	 Hex bolt M10.30	..10	8	 Flot head insert nut M10.18
..11	8	 Flot washer D10	..12	16	 Plastic block
..13	12	 Square block			

Parts list:

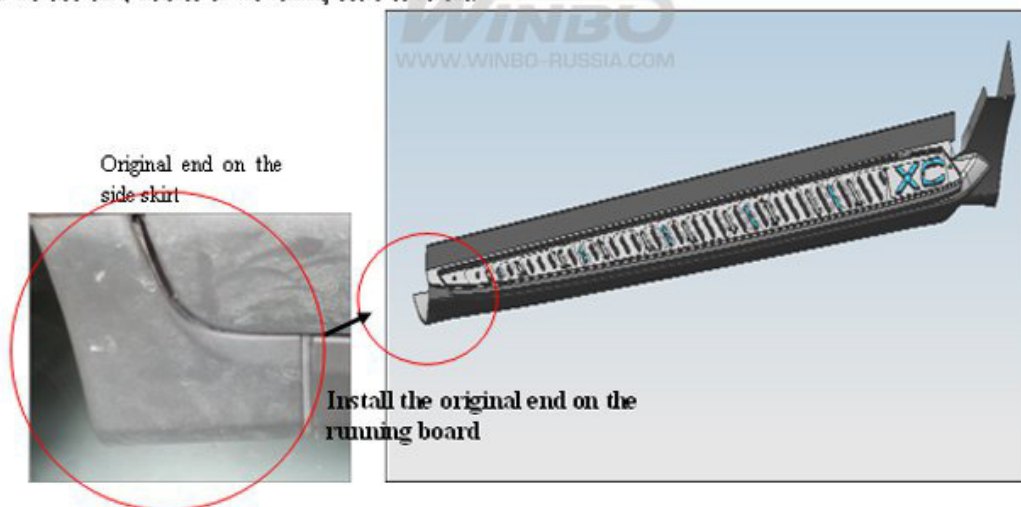
Installation steps: the right the same as the left.



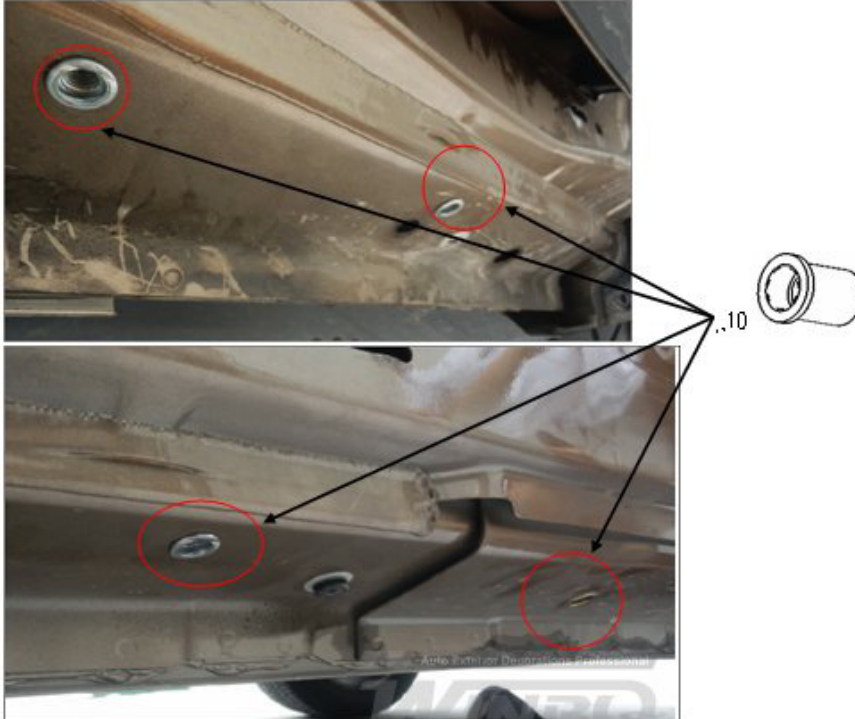
First step, Reference to the parts list to make sure all the parts are ready.



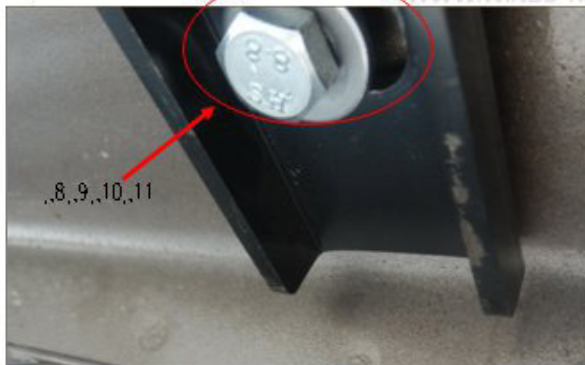
Step 2. Remove the side skirt and check all the clips are removed, and remember the original position of the clips. And remove the end of the side skirt, installed on the running board as follows:



Step 3: Just the following picture shows: install the flat head insert nut M8, 18, 10 on the hole of chassis with lamb gun or use the 5, 7, 8 as tool. Use the framework to make sure the position of hole and install four flat head insert nut M8, 18 on each side.



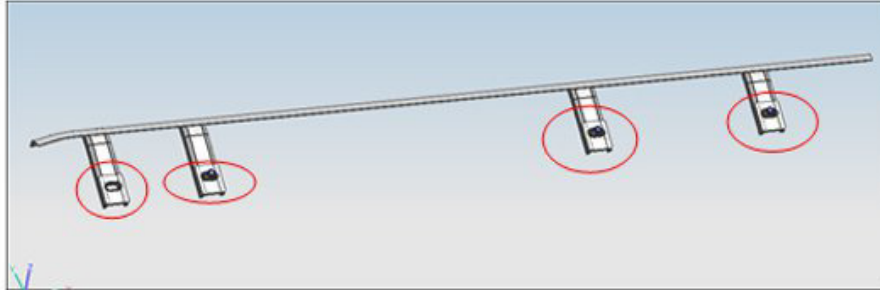
Step 4. Just as the following picture shows, install the framework and then screw lightly.



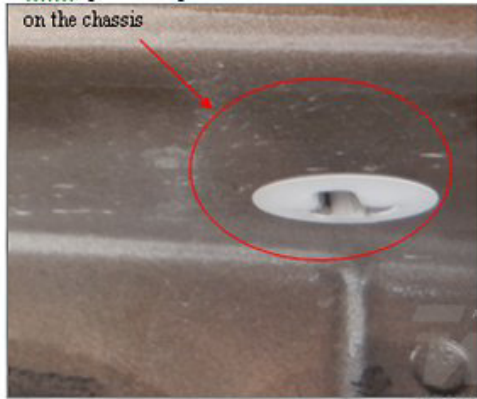
Installed framework picture



Step 5. Install the plastic clips on the chassis hole and then install the plastic clips on the running board. Reference to the original side skirt, install running board with the plastic clips



install plastic clips
on the chassis



After installation

Step 6. Finished the installation, just as follows:



DISCLAIMER: We are not responsible for any quality problems caused by improper installation and use.