

## ROOF RAIL FOR NISSAN QASHQAI 14+







### Before Installation

- Please read the instruction completely for easy installation, which will also help you to avoid scratches or other potential damages to your appealing car.
- The figures here are for reference only and may have differences with the actual product you received, however they share the same assembly way.







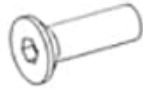
### Care and Cleaning

- Mild soap may be used also to clean the Product.
- Please periodically check and retighten all the hardware and clean the investment for a refresh look.

### Parts list

NO.	QTY	PICTUER	NO.	QTY	PICTUER
○.1	2	 Aluminum rod (left and right symmetry)	○.2	2	 Rear bottom (left and right symmetry)
○.3	2	 Rear bottom cover (left and right symmetry)	○.4	2	 Rear rubber washer (left and right symmetry)
○.5	2	 Front bracket (left and right symmetry)	○.6	2	 Front bottom (left and right symmetry)

# INSTALLATION INSTRUCTIONS

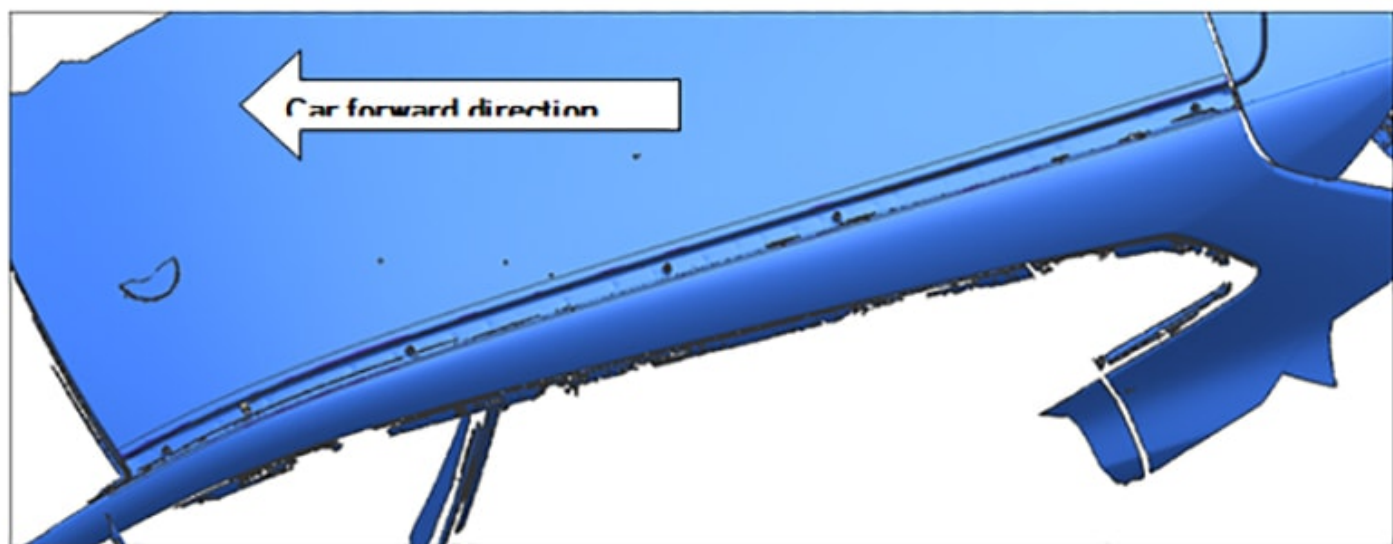
○.7	2	 <p>Front bottom cover (left and right symmetry)</p>	○.8	2	 <p>Front rubber washer (left and right symmetry)</p>
○.9	2	 <p>Rear bracket (left and right symmetry)</p>	Ошиб	4	 <p>Plastic clips</p>
Ошиб	8	 <p>Hexagon nuts with flange M6</p>	Ошиб	1	 <p>Hexagon wrench S=4</p>
Ошиб	8	 <p>Hexagon socket countersunk head screws M6_20</p>			

## Installation Steps

This installation instruction is just about one side installation method.  
The installation steps of left side and right side are the same.

Step 1: Verify that all parts are present according to the manual and illustration.

Step 2: Remove the rain gutter and keep it.



Step 3: Based on the front to remain 330mm, the mid to remain 925mm, cut the adhesive strip (if necessary) and restore installation.



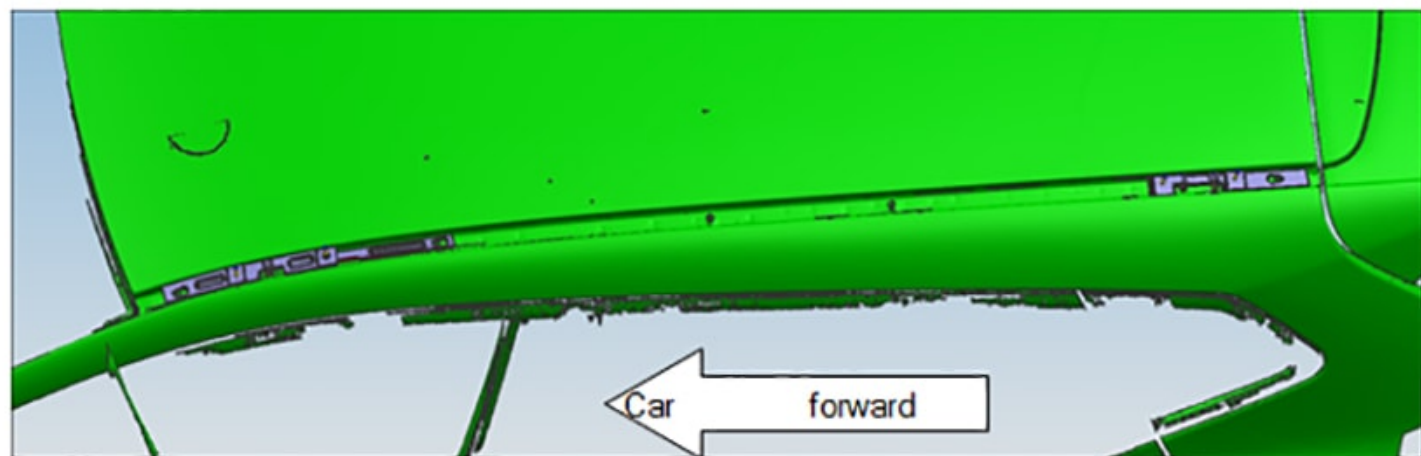


## INSTALLATION INSTRUCTIONS

Step 4: Remain the front of the adhesive strip (driver's cab), then restore installation. As shown in the following picture.



Step 5: Tighten up two bolts in the bracket for holding on the rain gutter. As shown in the following picture.



## INSTALLATION INSTRUCTIONS

### Front Bracket

Car forward direction

Step 2: as Fig shown, tighten up two bolts in the bracket for holding on the rain gutter.

Step 1: Use the bracket to hold on the rain gutter, push in the arrow direction.

### Rear Bracket

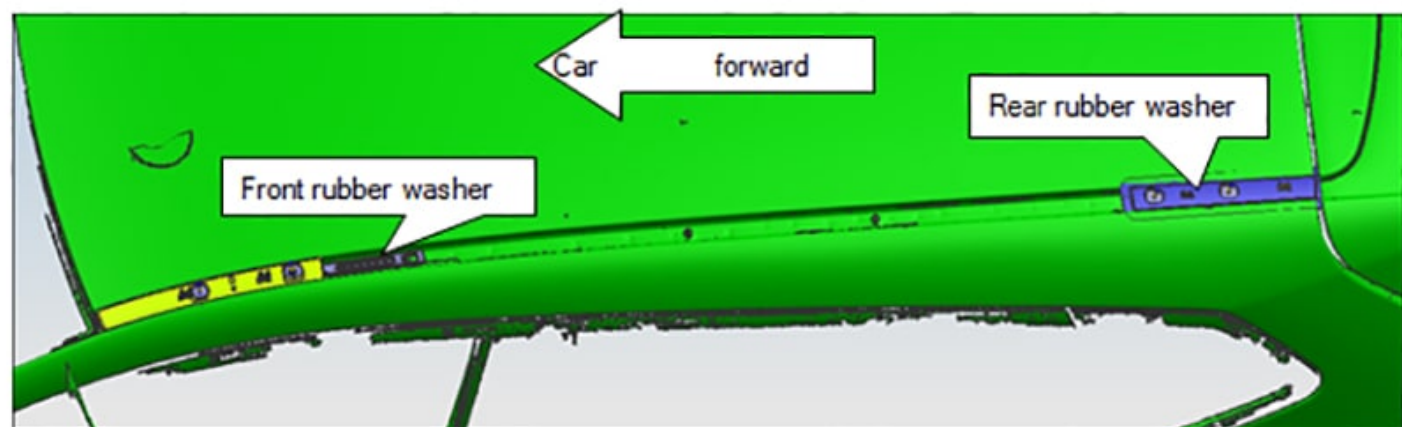
Car forward direction

Step 2: as Fig shown, tighten up two bolts in the bracket for holding on the rain gutter.

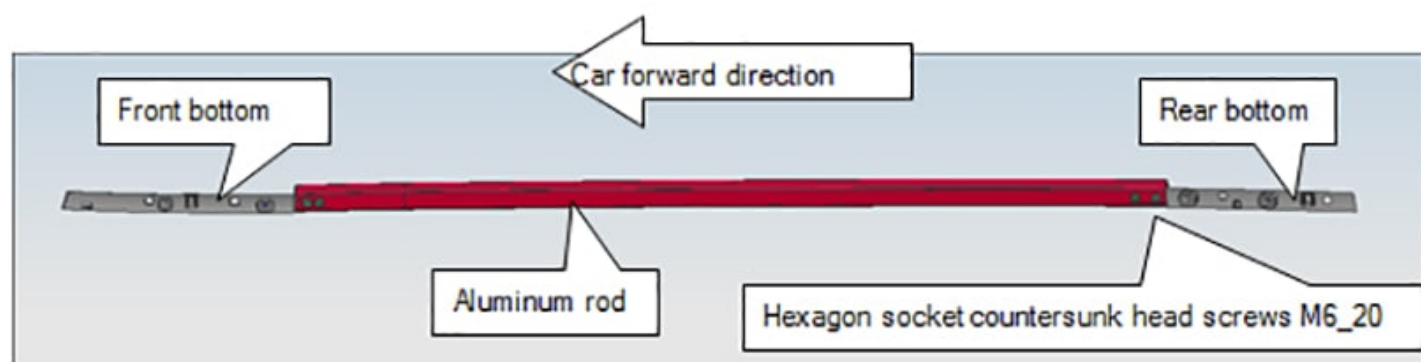
Step 1: Use the bracket to hold on the rain gutter, push in the arrow direction.

Step 6: Mounting front rubber washer and rear rubber washer to stuck in front bracket and rear bracket separately.

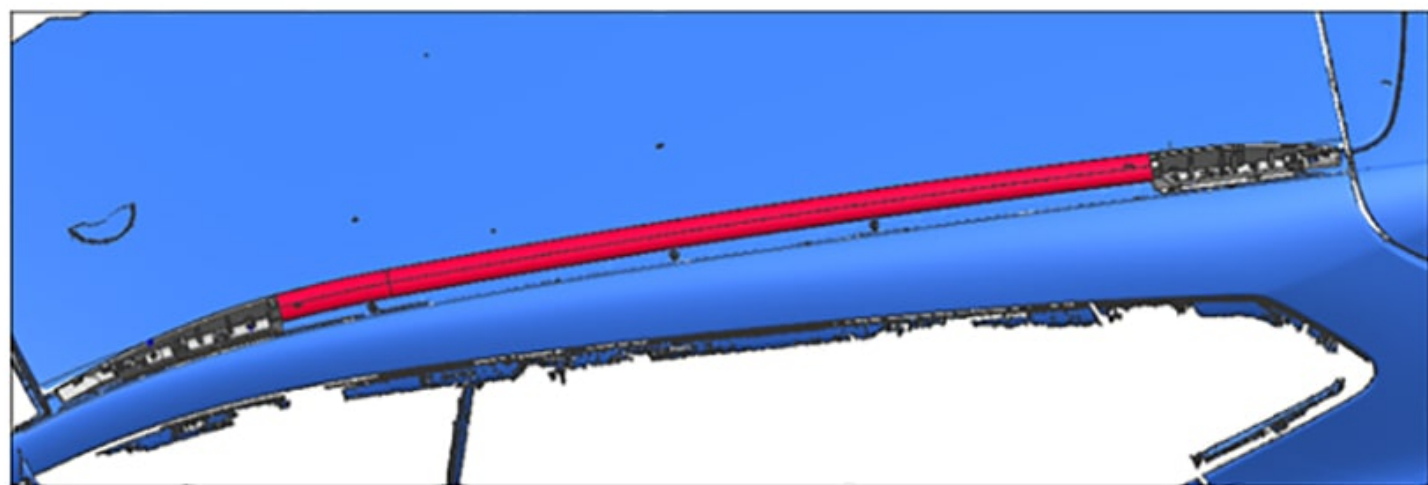
## INSTALLATION INSTRUCTIONS



Step 7: Each bottom use two pieces of Hexagon socket countersunk head screws M6\_20 to tighten up for linking on Aluminum rod with front bottom and rear bottom.



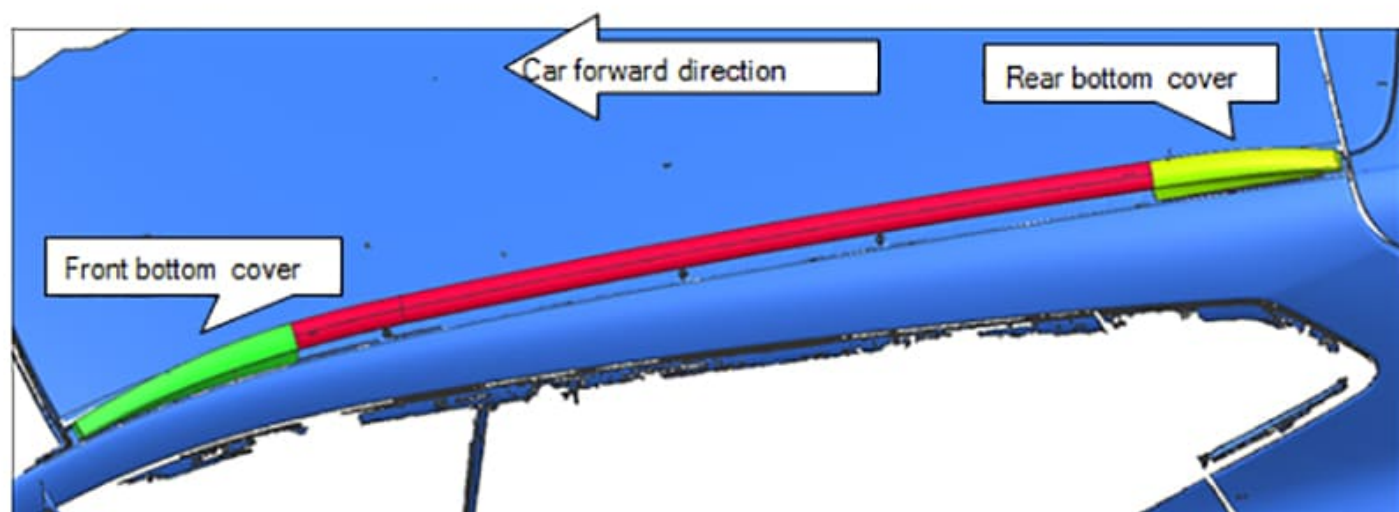
Step 8: Install the assembled roof rail on the car body with two Hexagon socket countersunk head screws M6\_20 to tighten up in the brackets.



Step 9: Install the Front bottom cover and Rear bottom cover. Attention to Plastic clip match with aluminum bottoms and the direction of plastic clip is paralleled with bottoms. Mount the front and rear bottom covers on the roof rail. Remove 3M double-sided adhesive tape of the front bottom cover and push aluminum rod for clamping.



## INSTALLATION INSTRUCTIONS



Step 10: Tighten up all the bolts and the installation is completed.

### NOTE

Any damages and losses caused by improper installation and application, goes beyond our quality warranty.